

RailSystem

2RU Fiber Termination Patch/Splice Panel

The RailSystem 2RU Fiber Termination Patch/Splice Panel is designed for use as a rack mount interconnect point where termination and connectivity of up to 96 fibers is desired. This solution allows for easy access to the front patch cords as well as the splice trays and pigtails after being pulled out. Mounted on telescopic runners to ensure the tray slides in and out with a smooth action. Standard panels are available empty for complete field configuration, half-loaded with adaptor plates for field termination and cable assembly installation, or stubbed with a factory-installed cable assembly of a user specified length. The panel also offers multiple cable entry solutions, up to 4 standard cable entry points for, loose tube, tight buffer, preterminated and steel tape armoured cable. Each panel has integrated strength member tie positions.

Features

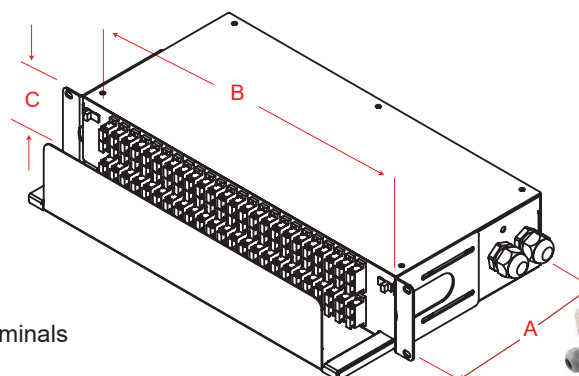
- ✓ Accepts loose tube, distribution and pre terminated cables
- ✓ Changeable adaptor plates
- ✓ Plastic lock for fixing the tray
- ✓ Pulled-open front pulled-out tray
- ✓ Optional splice tray kit for on site conversion to patch and splice panel

Specifications

- ✓ Cold Rolled Steel or Aluminium
- ✓ Durable textured powder coat finish available in black or white
- ✓ Universal 19/21" EIA/TIA rack compatibility
- ✓ Front cable manager for patch cords
- ✓ Front and back side mounting options
- ✓ Standard cable stub location is left/right side
- ✓ Optional cable stub location is rear

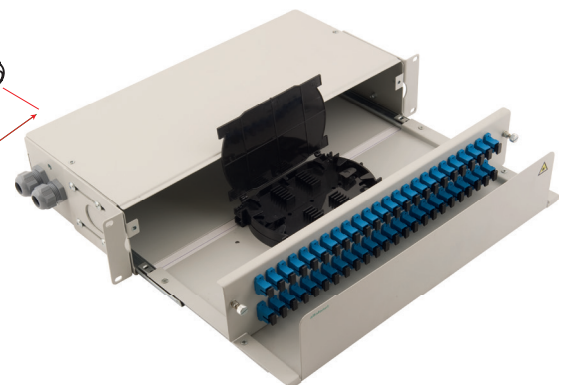
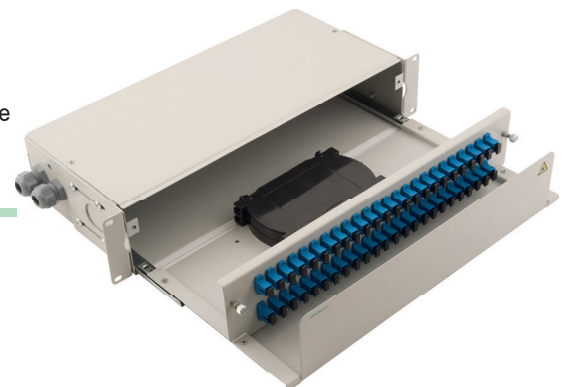
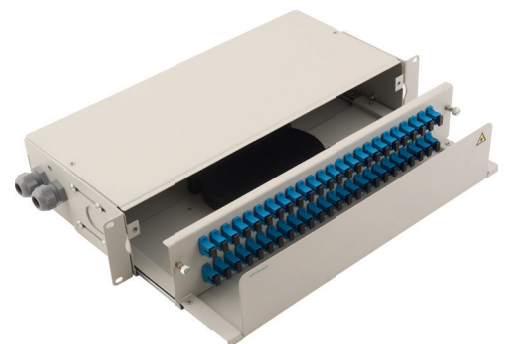
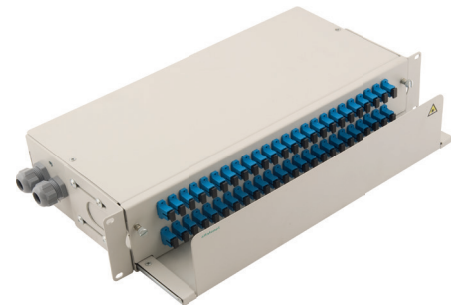
Applications

- ✓ Telecommunications closets
- ✓ Data Centers
- ✓ Customer Premise
- ✓ LAN / WAN Networks
- ✓ Central Offices / Headends
- ✓ Hubs / Cabinets / Remote Terminals
- ✓ FTTH / FTTB Networks



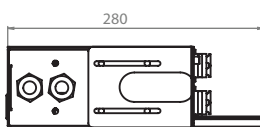
Dimensions

DEPTH A (mm)	WIDTH B (mm)	HEIGHT C (mm)	RACK UNITS	CAPACITY	UNLOADED WEIGHT
280	430	88	2	48/96	4,3 kg

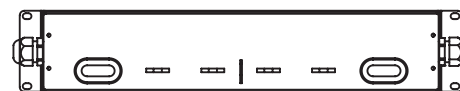




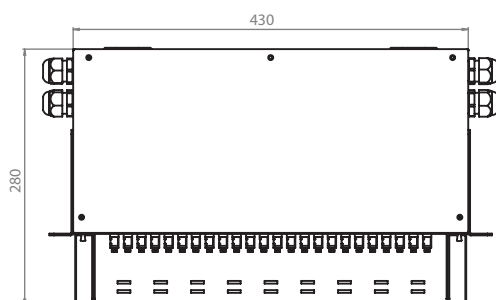
FRONT VIEW



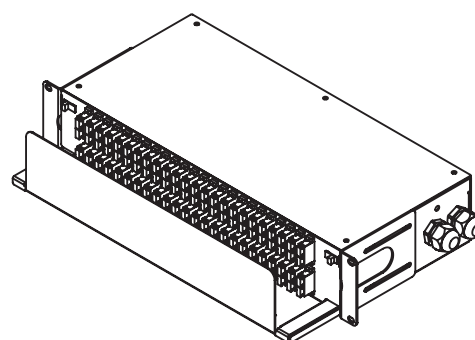
SIDE VIEW



BACK VIEW

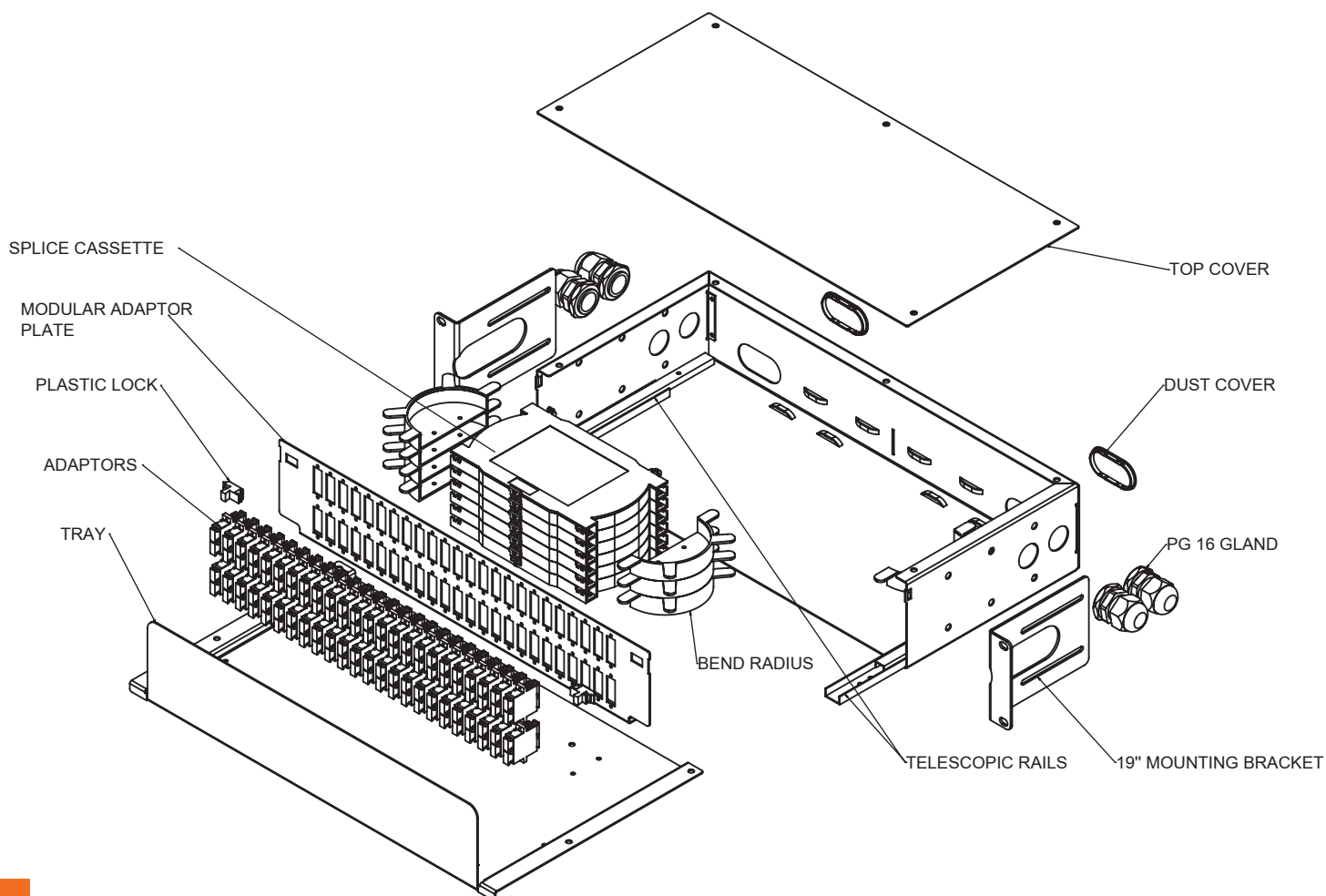


TOP VIEW

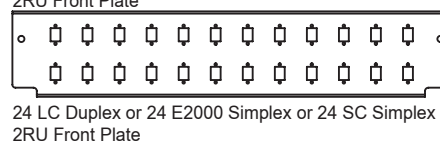
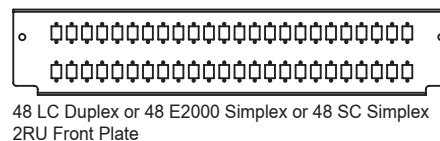
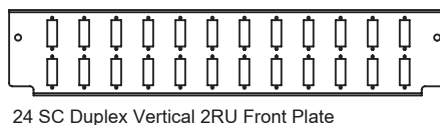
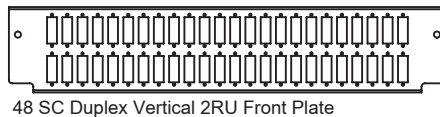
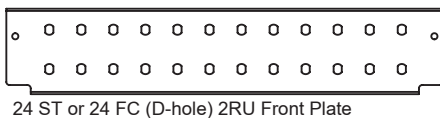
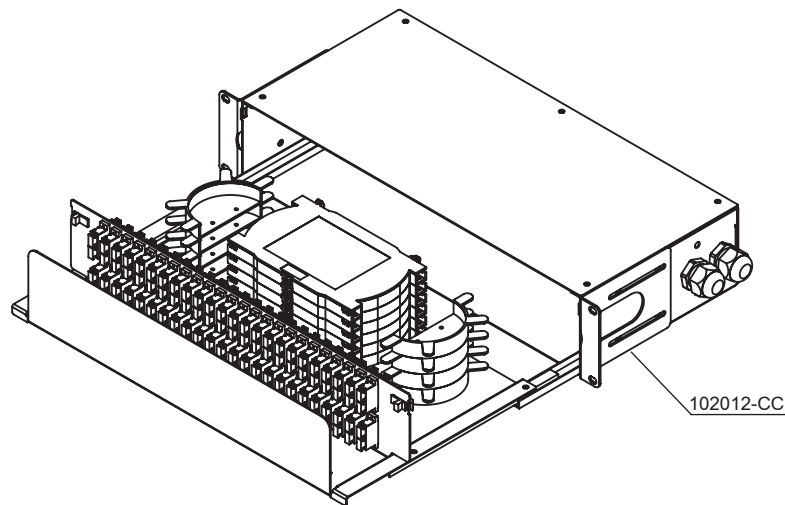


ISOMETRIC VIEW

EXPLODED VIEW



Order No*	Product Definition
102012-CC	RailSystem 2RU Fibre Optic Termination Panel, 19"- Sliding with Telescopic Rails,without front plate, Colour: Black RAL9005 or Light Grey-RAL7035,(2pcs. PG16 Plastic Gland, 2pcs. 50cm Spiral Wrap Ø8mm, 8pcs. Plastic Half Round Spools for Bend Radius 2pcs. Plastic Dust Cover for Cable Entries , 8pcs. 2,5mmX10 Cable Ties)



Order No*	RailSystem 2RU Front Plate Options
102012.01-CC	48 ST or 48 FC (D-hole) 2RU Front Panel
102012.02-CC	24 ST or 24 FC (D-hole) 2RU Front Panel
102012.03-CC	48 SC Duplex Vertical 2RU Front Panel
102012.04-CC	24 SC Duplex Vertical 2RU Front Panel
102012.05-CC	48 LC Duplex or 48 E2000 Simplex or 48 SC Simplex 2RU Front Panel
102012.06-CC	24 LC Duplex or 24 E2000 Simplex or 24 SC Simplex 2RU Front Panel

Ordering Information

* CC=LG for Light Grey RAL 7035 & BL for Black RAL 9005 for customers to define while ordering.